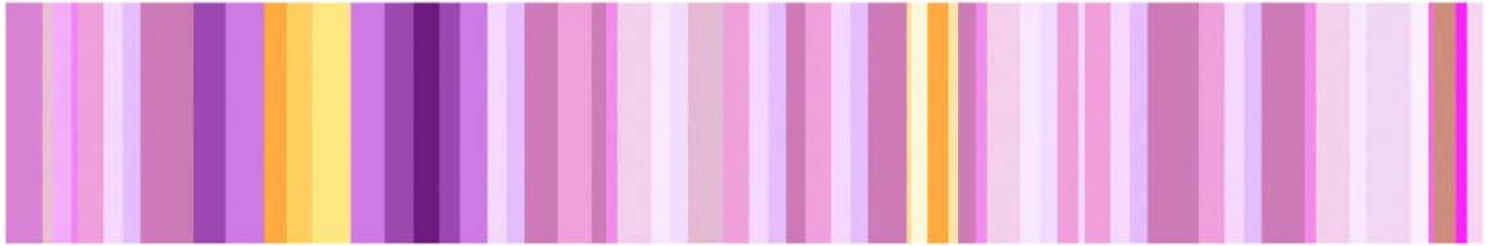


# WHAT IS JAMES WEARING?

from james andrew to you



## Bee Line Home

May 5th, 2009

by *James Andrew*.

Seeing a need for quality interior pieces with personality, comfort, and utility, at a competitive price point, the iconic decorator [Bunny Williams](#) has launched her first line of furniture and accessories. Thirty years in the making, the pieces in [Bee Line Home](#) are derived from designs Bunny has carefully collected throughout her distinguished career. In tightly controlled production runs, each object is in a limited and numbered edition ensuring these pieces will remain fresh and coveted for years to come.

Some of my favorite pieces shown here are the “Hourglass” table with its gilt octagonal base and marble top, the turquoise glazed lamp with its temple jar shape and gilt lotus pattern base, the “Eglomise” coffee table with gilt iron base and reverse painted glass top with a fortunary inspired print on a sea green ground, the “T42” chair and ottoman and the “Naughty Miss Bunny” throw in a luxurious faux rabbit fur, (which will be perfect for my beloved hounds, Rupert and Nigel to nest on!).



I can't wait to place many pieces from this fabulous collection on upcoming projects. Thank you Bunny for putting together such a brilliant collection and making it a bit easier for all of us to find a few spectacular pieces to make our rooms stand out.

Celebrating the launch of Bunny's collection at the uber chic [John Rosselli](#) showroom, I am wearing a white perforated leather jacket with black and saddle trim by [Gucci](#), [Tom Ford](#) shirt in black and white cotton stripes with French cuffs, [Seaman Schepps](#) cufflinks are shell with coral beads, plum skinny jeans by [Diesel](#), and python belt, tan leather tasseled loafers, and a black leather tote all by [Gucci](#).